

Gray's Landing

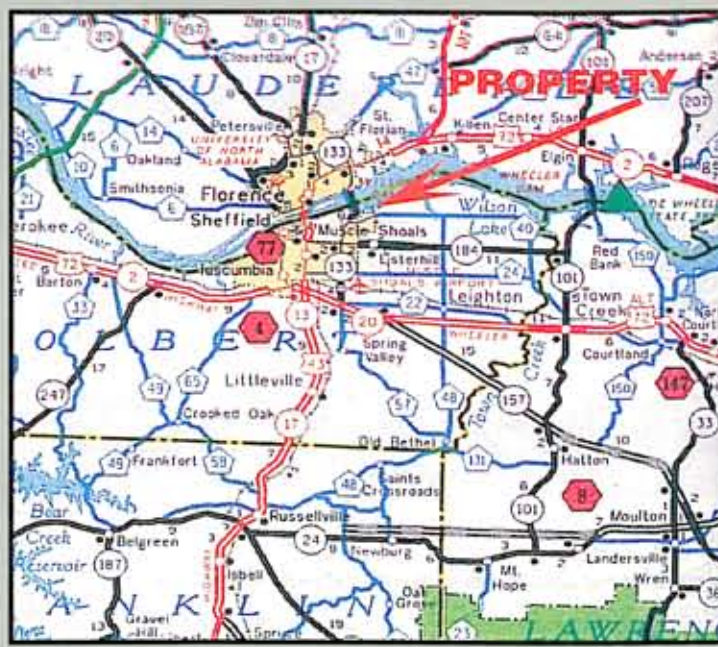
November 2
10:00am

TERMS AND CONDITIONS OF SALE:

10% down day of sale per parcel of which \$10,000 must be in the form of guaranteed funds, cash, cashiers check or personal or business check with bank letter of guarantee made to Granger, Thagard & Associates, Inc. Closing in 30 days. Balance of down payment may be made with personal/business check, accompanied with bank letter of credit for Gray's Landing Auction on 11/2/96.

- Purchaser pays all closing costs, including surveying which will be performed by Dutton Surveying, Inc.
- Property sold "as is...where is."
- Down Payment is non-refundable.

Announcements from the auction stand take precedence over printed material. Information in this brochure is from sources deemed reliable but not guaranteed by Granger Thagard & Associates, Inc.



AUCTION

Wilson Lake Water Front Property

104 Acres ± with 2,000 Feet ± of Water Front
Estate House, Two Guest Houses, Barn & Yacht House

November 2 • 10:00am

Open House Schedule:

Sunday October 20th & 27th 2-5pm • Thursday & Friday
prior to Auction 1-5pm and by Appointment

Open House Schedule:
Sunday October 20th & 27th 2-5pm •
Thursday & Friday prior to Auction 1-5pm
and by Appointment

Granger Thagard & Associates, Inc.
3410 Independence Drive, Suite 210
Birmingham, AL 35209
(800) 996-2877 • (205) 870-7883
FAX: (205) 870-7852
Jack F. Granger, CAI, 873
G.W. (Bill) Thagard, CAI, 675
Jim Jordan, 2292
David L. Miles, 2392

Contact us on the Internet at:
<http://www.homewood.net/GTA>
or E-Mail us at:
gtauctions@aol.com

(800) 996-2877 • (205) 870-7883



Granger Thagard & Associates, Inc.
3410 Independence Drive, Suite 210
Birmingham, AL 35209
(800) 996-2877 • (205) 870-7883
FAX: (205) 870-7852
Jack F. Granger, CAI, 873
G.W. (Bill) Thagard, CAI, 675
Jim Jordan, 2292
David L. Miles, 2392

AUCTION

FIRST CLASS
U.S. POSTAGE
PAID
PERMIT #205
BIRMINGHAM, AL



Florence — Muscle Shoals, Alabama Area
Wilson Lake Water Front Property
104 Acres ± with 2,000 Feet ± Water Front
Estate House, 2 Guest Houses, Yacht House

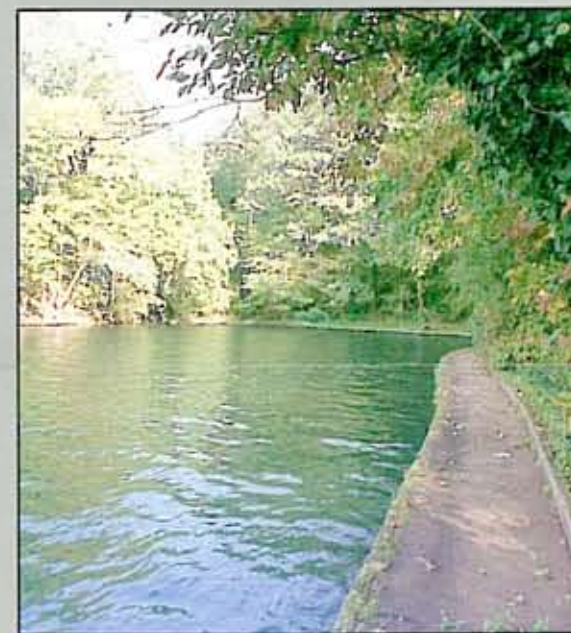
November 2 • 10:00am

Broker cooperation welcomed.

Florence - Muscle Shoals, Alabama Area

**Gray's
Landing**

WILSON LAKE



Just imagine year round Wilson Lake enjoyment! Rarely does an estate the size of Gray's Landing come on the market. Your opportunity to purchase part or all of Gray's Landing is Nov. 2, 1996. From a Corporate retreat ... to Building Development ... to Golf Course and Club ... to Estate Size Lots ... to Motel/Marina/Boatel - the choice is yours. 104 +/- acres with almost 1/2 mile of waterfront will be offered at AUCTION.

Just think how many times you've wanted to own property on Wilson Lake. It will be even more convenient when the new bridge is built over Patton Island and Gray's Landing should be just minutes from work and schools.

Just reflect on finding property almost in the same setting as the Gray family did in 1947 when they built the Landing. As you tour the home, cottages and lodge, notice the thickness of the walls, the woodwork (all was milled on sight from trees at Gray's Landing), and the art deco look of the baths that adjoin each bedroom.

Just view from the porches the year round mural of color that nature provides not only over the water, but over all the wooded estate. To current knowledge, the remaining timber has never been cut or thinned.

The massive barn can again accommodate livestock and the large yacht-house waits for occupancy.

The main house has over 6,000 sq ft with 6 bedrooms and 6 baths. Large dens on both floors have great views. The dining/kitchen areas adjoin the hotel styled lodge of master suites and activity rooms.

Purchase a part or all of one of the last estates on Wilson Lake. So secluded, yet so close to the city.

DIRECTIONS: Just south of Wilson Dam on Hwy 133 take Tennessee River Road East 2.5 Miles ±, Turn left on Wilson Lake Shores Road, drive 1/2 mile and turn left onto Pine Grove Drive. Watch for Auction Signs.

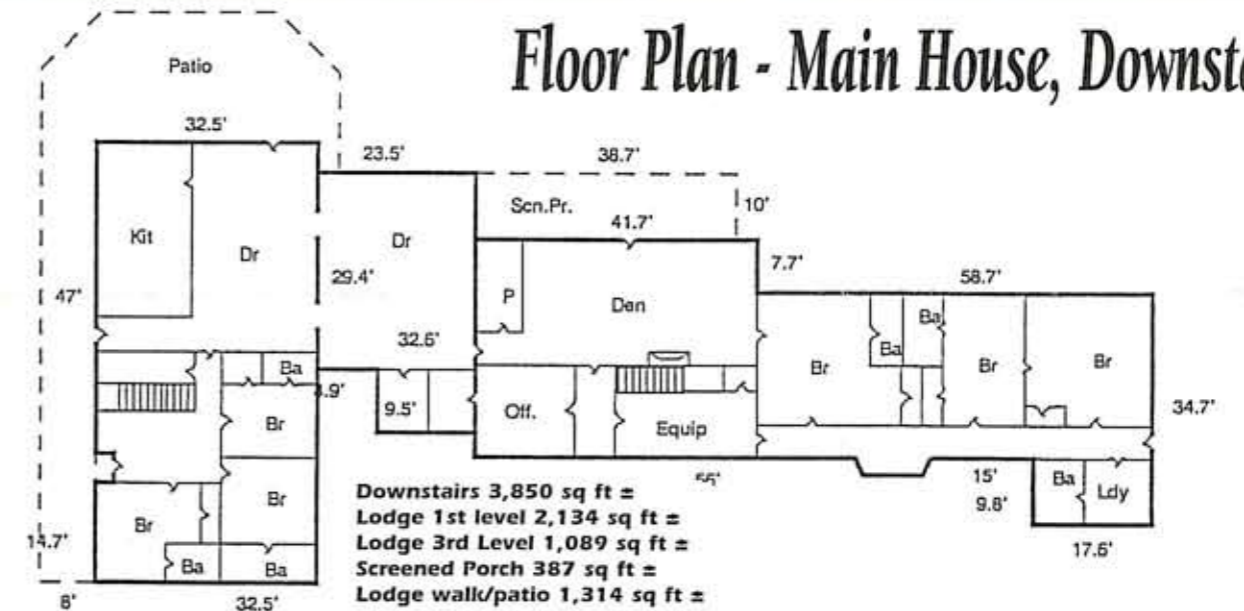
**Granger
Thagard
& Associates, Inc.**
3410 Independence Drive, Suite 210
Birmingham, AL 35209
(800) 996-2877 • (205) 870-7883
FAX: (205) 870-7852
Jack F. Granger, CA, 873
G.W. (Bill) Thagard, CA, 675
Jim Jordan, 2292
David L. Miles, 2392

(800) 996-2877 • (205) 870-7883

PARCEL MAP

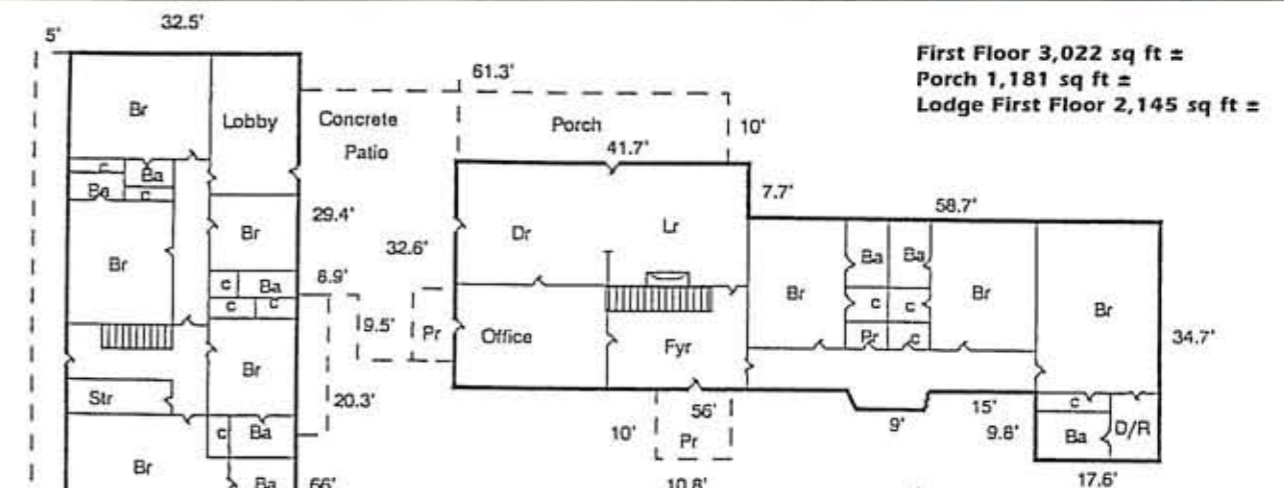


Floor Plan - Main House, Downstairs



**Gray's
Landing**

Property will be offered in parcels, combinations of parcels and/or as an entirety.



Floor Plan - Main House, First Floor