

| WINDOW SCHEDULE | | | | |
|--|-----------------------------|--------------|----------------|----------------------------|
| WINDOW TYPE | FRAME WIDTH | FRAME HEIGHT | GRILLE PATTERN | FACTORY APPLIED BRICK MOLD |
| (A) (1) OPERABLE CASEMENT (5) FIXED CASEMENT | (2) 2'-8" EA 5'-4" TOTAL | 4'-6" | RECTANGULAR | YES |
| (B) FIXED CASEMENT | 1'-8" | 6'-0" | RECTANGULAR | NO, FIELD APPLIED TRIM |
| (C) (1) OPERABLE CASEMENT (1) FIXED CASEMENT | (2) 2'-8" EA 5'-4" TOTAL | 6'-0" | RECTANGULAR | YES |
| (D) FIXED CASEMENT | 2'-8" | 6'-0" | RECTANGULAR | YES |
| (E) (1) OPERABLE CASEMENT (2) FIXED CASEMENTS | (3) 2'-4" EA 7'-0" TOTAL | 6'-0" | RECTANGULAR | YES |
| (F) (1) OPERABLE CASEMENT (2) FIXED CASEMENTS | (3) 2'-4" EA 7'-0" TOTAL | 6'-0" | RECTANGULAR | YES |
| (G) DIRECT SET FULL ROUND WINDOW | 2'-6" | 2'-6" | RECTANGULAR | YES |
| (H) (1) OPERABLE CASEMENT | 5'-0" | 4'-6" | RECTANGULAR | YES |
| (I) (1) OPERABLE CASEMENT | 5'-0" | 4'-6" | RECTANGULAR | YES |
| (J) (1) OPERABLE CASEMENT | 2'-8" | 4'-6" | RECTANGULAR | NO, FIELD APPLIED TRIM |
| (K) (1) OPERABLE CASEMENT (1) FIXED CASEMENT | (2) 2'-8" EA 5'-4" TOTAL | 4'-6" | RECTANGULAR | YES |
| (L) (1) OPERABLE CASEMENT (1) FIXED CASEMENT | (2) 2'-4" EA 4'-8" TOTAL | 4'-6" | RECTANGULAR | YES |
| (M) FIXED CASEMENT FALL ANGLE TOP | 2'-4" | 5'-6" | RECTANGULAR | YES |
| (N) OPERABLE AWNING | 5'-0" | 2'-0" | NONE | YES |
| (O) (1) OPERABLE CASEMENT | 5'-0" | 3'-8" | RECTANGULAR | YES |

- WINDOW NOTES:**
- ALL WINDOWS SHALL BE WOOD WINDOWS EQUAL TO WEATHERSHIELD OTHER WINDOW BRANDS ACCEPTABLE (KOLBE, JELD WEN, ETC.)
 - SUBMIT WINDOW SAMPLES FOR OWNER'S APPROVAL.
 - ALL PAINT GRADE WOOD SHALL BE PAINTED WITH LATEX PAINT, SEMI-GLOSS FINISH.
 - ALL GRILLES SHALL BE SIMULATED DIVIDED LITES, WITH GRILLES ON INSIDE AND OUTSIDE OF GLASS SHALL BE DOUBLE INSULATED.
 - WINDOWS SHALL HAVE STANDARD WOOD BRICK MOLD.
 - INTERIOR TRIM BY G.C.
 - CONTRACTOR SHALL SUBMIT WINDOW SCHEDULE TO OWNER FOR APPROVAL BEFORE ORDERING
 - PAIN NEW WINDOW UNITS AND SASHES ON INTERIOR AND EXTERIOR SIDE.

AREA OF HOUSE
MAIN LEVEL - 2,385 S.F.
UPPER LEVEL - 1,218 S.F.
TOTAL HEATED - 3,603 S.F.

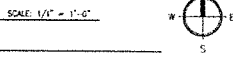
FLOOR PLAN- MAIN FLOOR

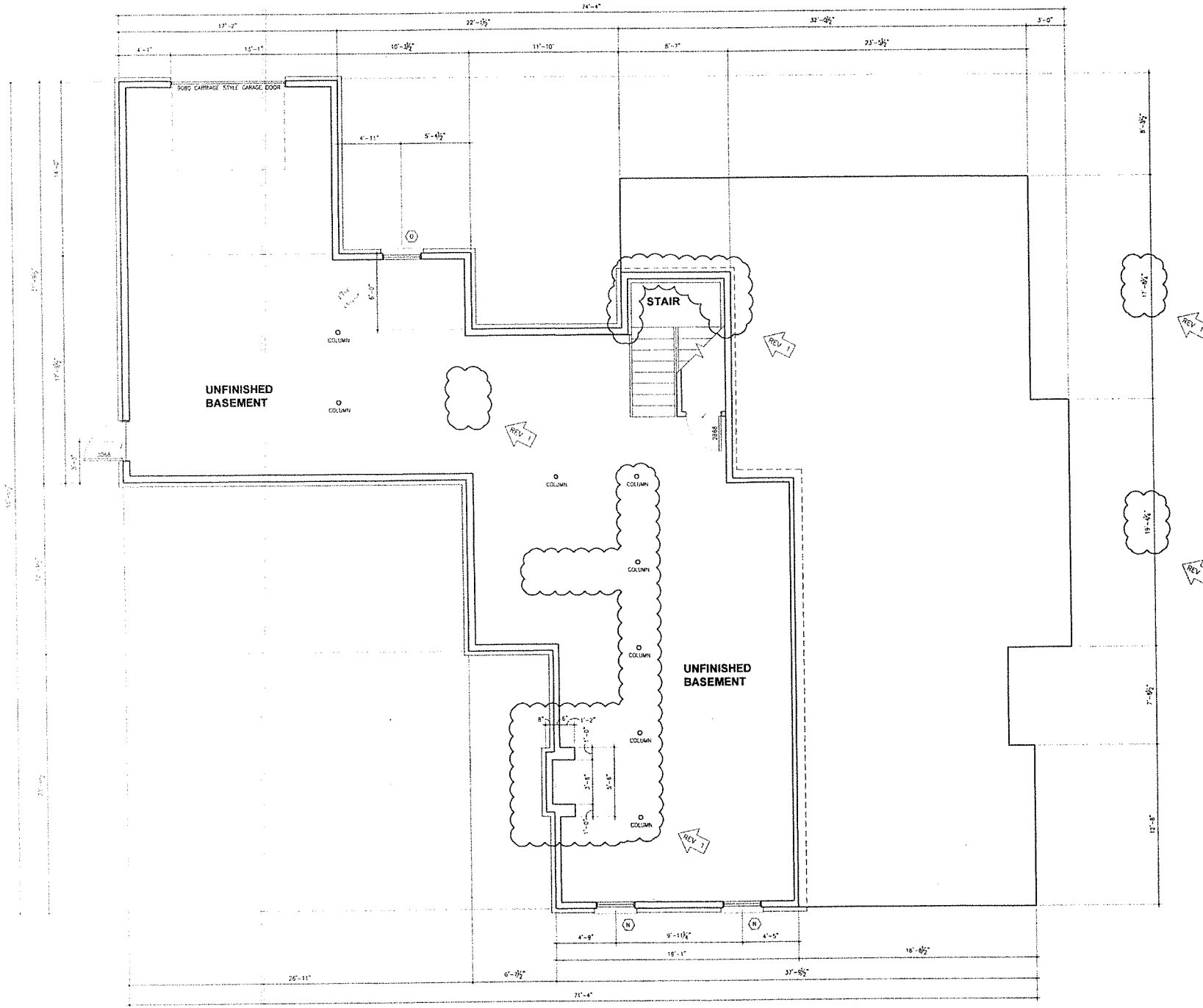
NOTES

- GENERAL CONTRACTOR SHALL FIELD VERIFY ALL EXISTING CONDITIONS AND DIMENSIONS. BRING DISCREPANCIES TO THE ATTENTION OF THE OWNER BEFORE PROCEEDING WITH WORK.
- ALL INTERIOR DIMENSIONS ARE TO FACE UNLESS NOTED OTHERWISE.
- RENDER ALL WORK IN ACCORDANCE WITH ALL APPLICABLE CODES. CONTRACTOR SHALL OBTAIN A BUILDING PERMIT FOR THIS WORK.

LEGEND

- TYPICAL INTERIOR PARTITION - 2x4 WOOD STUDS @ 16" O.C. WITH 1/2" GYP. ON BOTH SIDES.
- TYPICAL EXTERIOR PARTITION - 2x4 WOOD STUDS @ 16" O.C. WITH 1/2" GYP. ON INTERIOR FACE, 1/2" SHEATHING AND BRICK VENEER ON EXTERIOR FACE. STUD SPACES SHALL MEET R-14 RATE REQUIREMENT.
- WINDOW DESIGNATION SEE WINDOW SCHEDULE.
- INTERIOR ELEVATION DESIGNATION SEE INTERIOR ELEVATIONS.

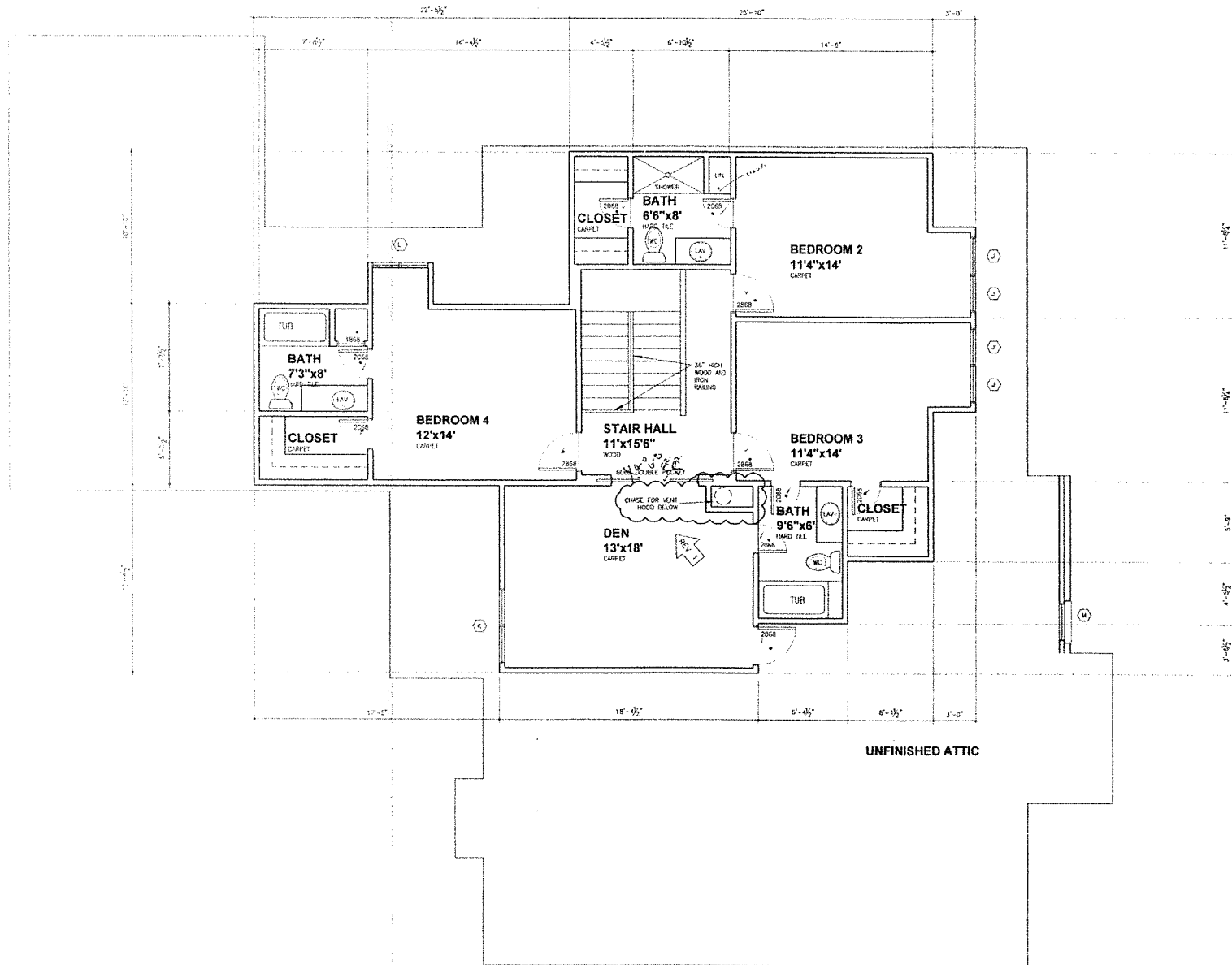




BASEMENT FLOOR PLAN

SCALE 1/4" = 1'-0"





FLOOR PLAN- UPPER FLOOR

SCALE: 1/4" = 1'-0"

