

31+/- Acres on Argo-Margaret Road

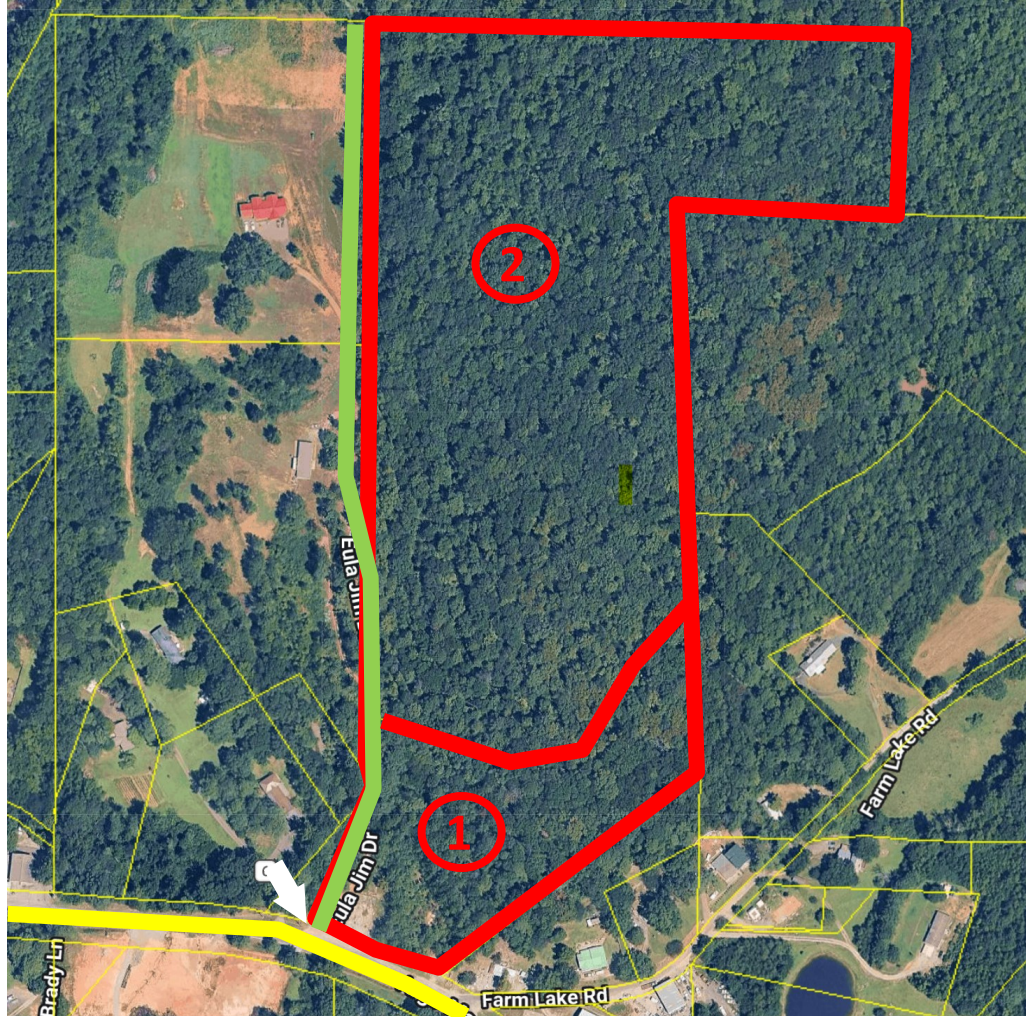
1

6.6+/- Acres at the corner of Argo-Margaret Road and Eula Jim Drive. 300+/- feet of road frontage on Argo-Margaret Road. In Argo, AL, zoned as "low-density residential." Offered in parcels or as a combination.

St. Clair County Parcel Tax ID #

15-07-26-0-001-004.005

Springville School District



2

25+/- Acres on Eula Jim Drive. 1,800+/- feet of road frontage on Eula Jim Drive. This acreage is in unincorporated St. Clair County, AL, without specific zoning. Offered in parcels or as a combination.

St. Clair County Parcel Tax ID #

15-07-26-0-001-004.003

Springville School District

Illustration Only

Argo-Margaret Road

Eula Jim Rd